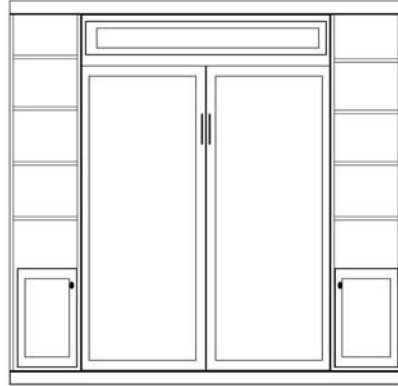
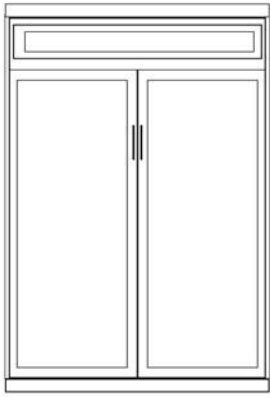


TAHOE



Made in the U.S. from birch solids and veneers on premium furniture grade ply-core.
Accepts standard bedding (not included) up to 11" thick.
(TV8 wallbed system does not incl. a headboard or pier backing)
Please refer to Birch wood samples for finish selection.



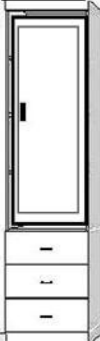
Decorative Hardware Options: #3 stainless Bar, #6 Atherly Bonze or #8 Atherly Nickel

| SKU | DESCRIPTION | DIMENSIONS | DIMENSIONS OPEN | WT/CUFT |
|---------|--|-----------------|-----------------|---------|
| TV50 | VERTICAL QUEEN WALLBED | 65w x 17d x 90h | 65w x 86d x 90h | 265/41 |
| TV8 SET | VERTICAL QUEEN WALLBED SET INCL. 2 -NDQS 16" DOOR PIER CABINETS One continuous cabinet top and bottom. | 96w x 17d x 90h | 96w x 86d x 90h | 440/87 |

PIER CABINETS

Pier cabinets are made from solid birch and veneers on ply-core. Drawers have full extension glides and the wardrobe door(s) conceal a clothes valet along with an adjustable shelf. We offer two different pier widths (16,24) to give you the greatest flexibility when planning your room. Piers come in two different heights; 90" tall (which is the same height as the queen wallbed) and 85" tall (same height as a full or twin wallbed).


When ordering single door pier cabinets, please indicate handle placement (left or right side) when facing the cabinet.



Mini Wardrobe
Three drawers, door with clothes valet and shelf inside.
(left or right handle)

TPWF / Q
24w x 17d x 85/90h


WT/CU
127/23



File Wardrobe
Two lateral file drawers, Pencil drawer, upper door with clothes valet and shelf inside. (left or right handle)


TPXF / Q
24w x 17d x 85/90h

WT/CU
127/23



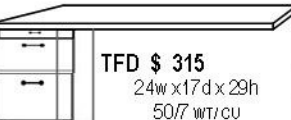
File Pier Two file drawers, pencil drawer, with open adj. shelves above.

| SKU | WT/CU | DIMENSIONS |
|------|--------|-----------------|
| TPLF | 122/23 | 24w x 17d x 85h |
| TPLQ | 122/23 | 24w x 17d x 90h |
| TLFS | 85/10 | 16w x 17d x 85h |
| TLQS | 90/11 | 16w x 17d x 90h |



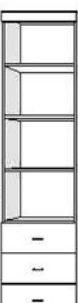
Bookcase Center fixed shelf with adjustable shelves.

| SKU | WT/CU | DIMENSIONS |
|------|-------|-----------------|
| TPBF | 82/23 | 24w x 17d x 85h |
| TPBQ | 82/23 | 24w x 17d x 90h |
| TBFS | 80/10 | 16w x 17d x 85h |
| TBQS | 85/11 | 16w x 17d x 90h |




Peninsula Desk
Lateral file drawer,
medium drawer and pencil
drawer. Requires door pier
TPCF/Q to receive desktop.
84" desktop length

TFD \$ 315
24w x 17 d x 29h
50/7 WT/CU




Three Drawer -Three drawers,
with open adjustable shelves
above.

| SKU | WT/CU | DIMENSIONS |
|------|--------|-----------------|
| TPTF | 122/23 | 24w x 17d x 85h |
| TPTQ | 122/23 | 24w x 17d x 90h |
| TTFS | 85/10 | 16w x 17d x 85h |
| TTQS | 90/11 | 16w x 17d x 90h |



Door Pier One door with open
adjustable shelves above.

| SKU | WT/CU | DIMENSIONS |
|------|-------|-----------------|
| TPCF | 88/23 | 24w x 17d x 85h |
| TPCQ | 88/23 | 24w x 17d x 90h |
| TCFS | 85/10 | 16w x 17d x 85h |
| TCQS | 90/11 | 16w x 17d x 90h |



Pull Out Tray
Two drawers, Pull out tray, with
open adjustable shelves above.

| SKU | WT/CU | DIMENSIONS |
|------|--------|-----------------|
| TPNF | 122/23 | 24w x 17d x 85h |
| TPNQ | 122/23 | 24w x 17d x 90h |
| TNFS | 85/10 | 16w x 17d x 85h |
| TNQS | 90/11 | 16w x 17d x 90h |

MADE IN