

# NORDIC

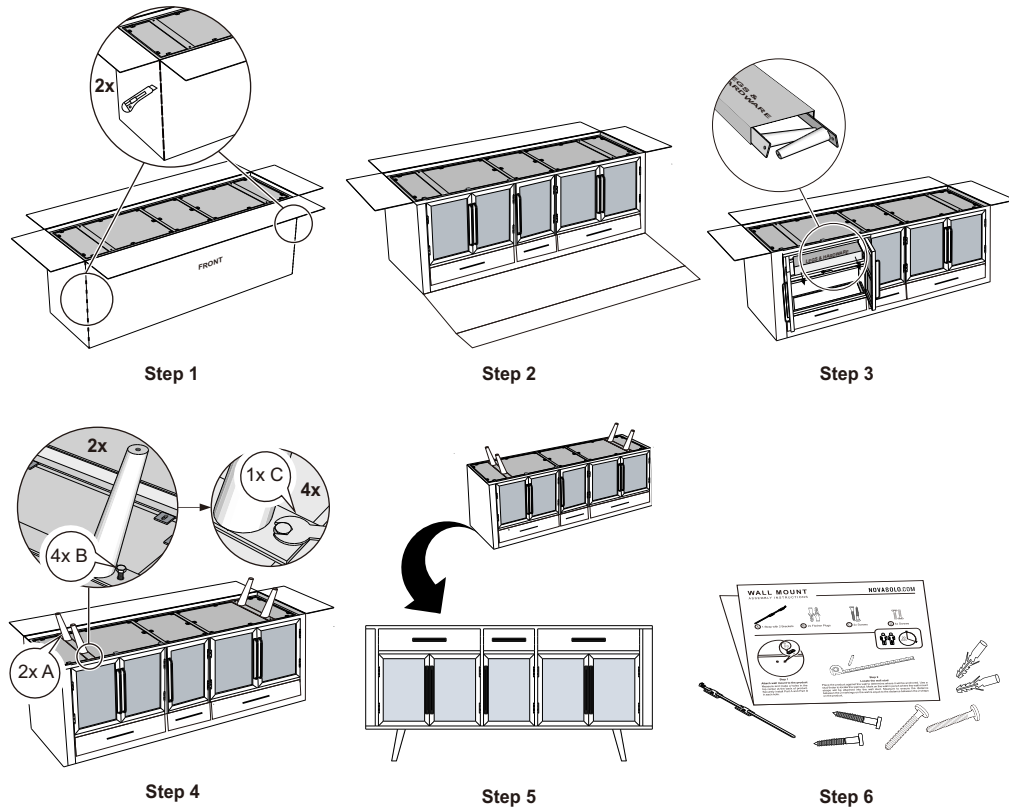
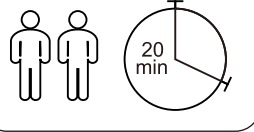
## ASSEMBLY INSTRUCTIONS

KK NO 19005, KK NO 18001, KK NO 19002, KK NO 19006, KK NO 19008, KK NO 19054, MD RT 19052, MD RT 18050, MD RT 19053, MD RT 19050, MD RT 19051, MD RT 19054, BW RT 19052, BW RT 18050, BW RT 19053, BW RT 19050, BW RT 19051 & BW RT 19054

NOVASOLO.COM



\* The product image in the assembly instructions is included for the purposes of depicting the assembly steps. The assembly instructions apply to all models shown below.

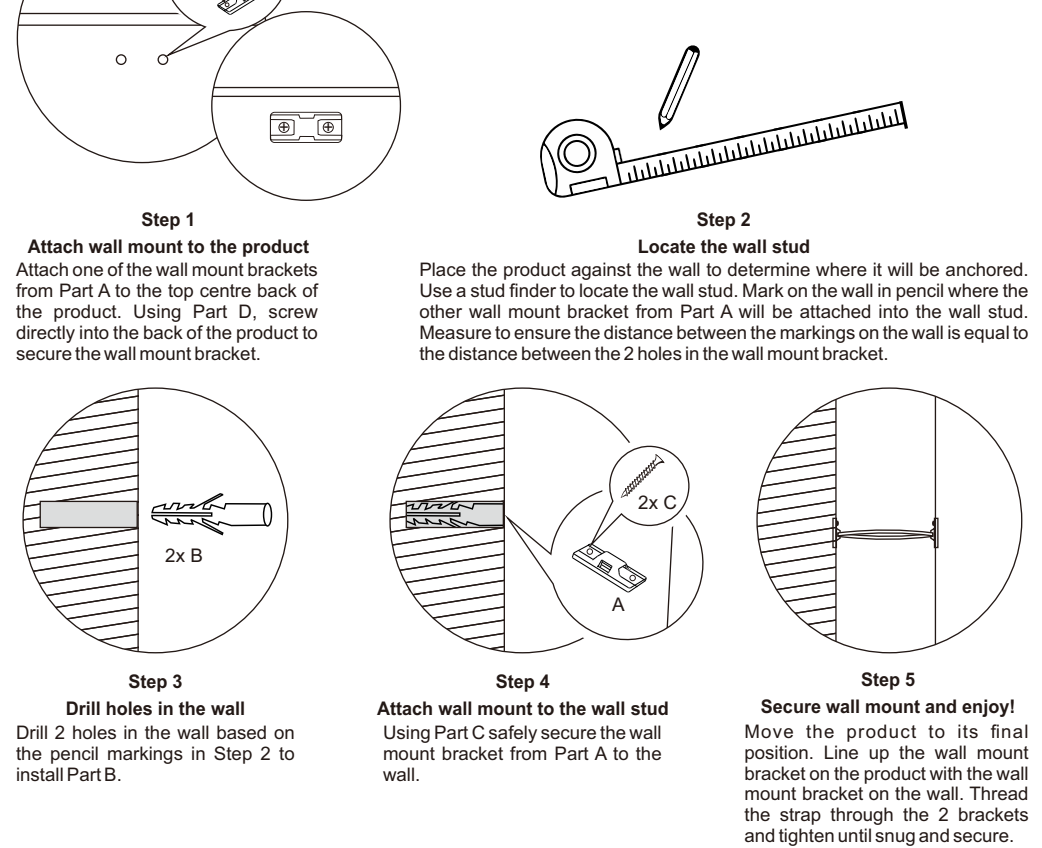
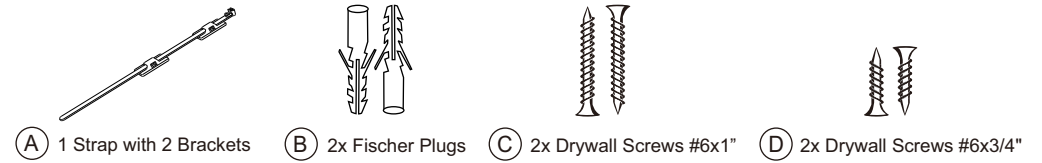


# WALL MOUNT

## ASSEMBLY INSTRUCTIONS

Nordic, Nordic Rattan & Nordic Mindi Rattan Collections

NOVASOLO.COM



**WARNING**

Always use the proper tools during assembly. Follow the assembly steps in order. DO NOT skip any steps. Be sure to check all packing materials carefully for assembly hardware. If any parts are missing, contact the retailer from which you purchased the product to obtain any missing parts. DO NOT USE SUBSTITUTE PARTS. During assembly tighten screws first by hand. Once all screws are in place use the tool provided to tighten. Periodically check to ensure that all hardware (bolts, screws, etc.) are tight. DO NOT stand on the product during assembly. Where assembly instructions state that assembly requires two or more people, DO NOT attempt to assemble by yourself as there is a risk of injury.

**WARNING**

Serious or fatal crushing injuries can occur from furniture tip-over. To prevent this furniture from tipping over it must be permanently fixed to the wall with the included wall attachment devices. Please note the fastening devices included are not suitable for all wall types. Use fastening devices suitable for the walls in your home. For advice on suitable fastening devices, please contact your local hardware store.