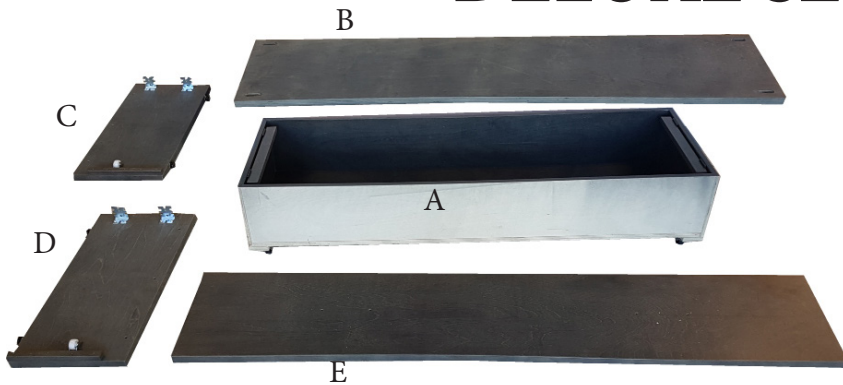
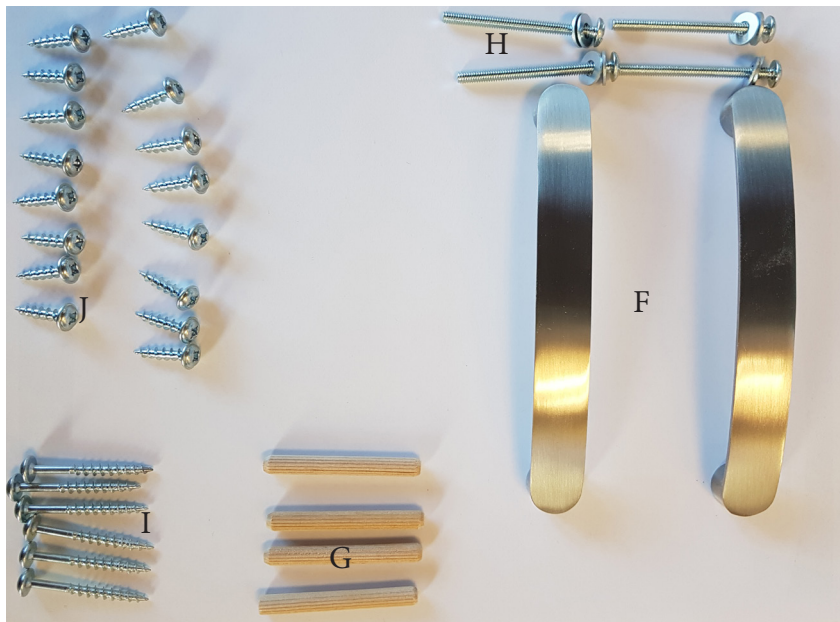


Assembly Instructions for Knock Down Pedestal DELUXE SERIES



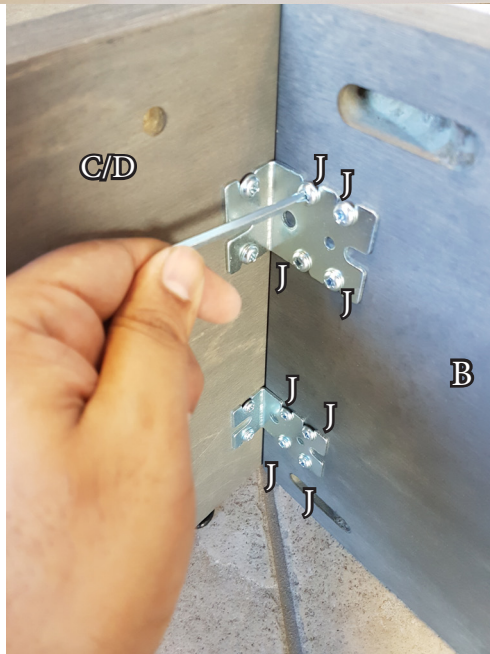
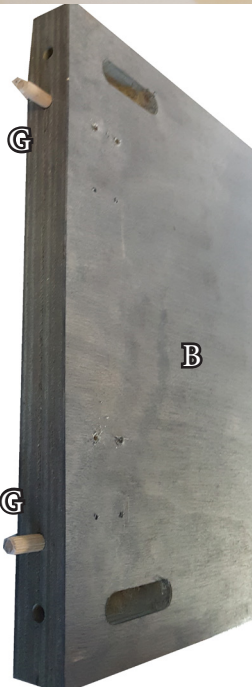
Ensure You Have The Following Components:

- 1 x Drawer Box (A)
- 1 x Pedestal Back (B)
- 1 x Left Pedestal Side (C)
- 1 x Right Pedestal Side (D)
- 1 x Drawer Front (E)



Ensure the following hardware is included:

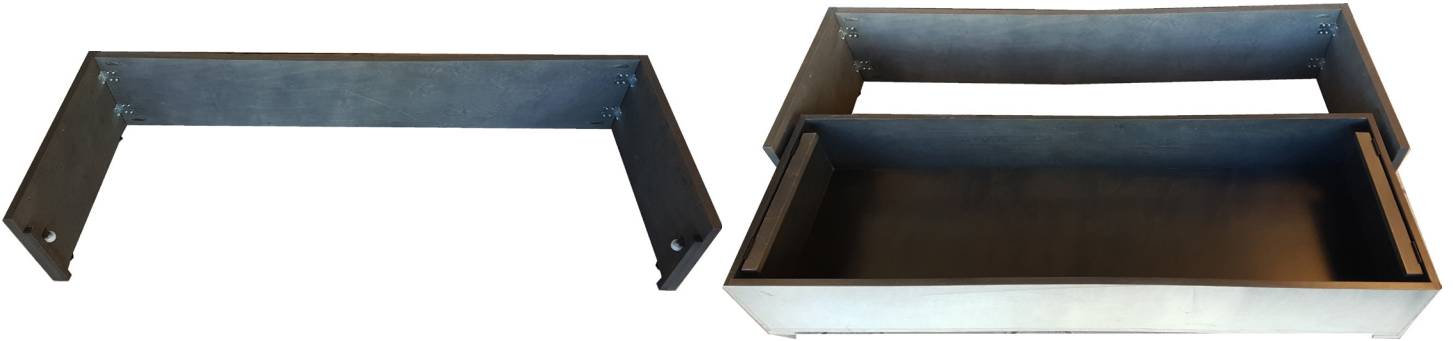
- 2: Drawer Handles (F)
- 4: 1/4" x 2" Wooden Dowels (G)
- 4: Handle bolts (H)
- 6: #8 x 1 1/2" Long Screws (I)
- 16: #8 x 3/4" Short Screws (J)



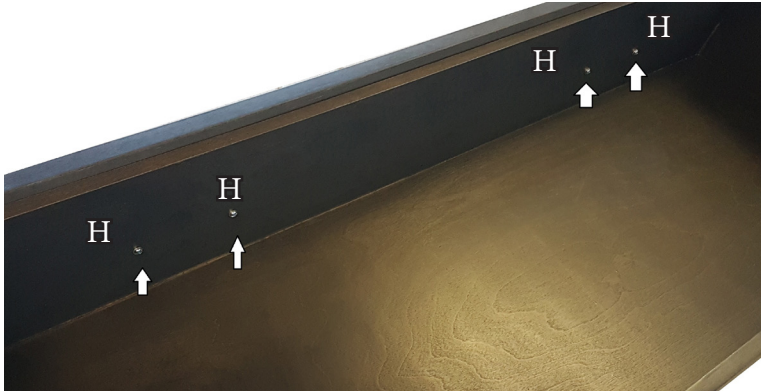
Using the pre drilled areas

Insert Wooden Dowels (G) to the Back panel (B) in the center two holes

Next, attach Pedestal side panels by making the two sides flush, then screw bracket to Back panel by using 8 short screws (J) and provided allen key until bracket is flush with panel. Repeat this for the other side panel.



Level the frame with the floor. Next lift (2 person recommended) the drawer box and lower into the pedestal panels with the predrilled hardware holes facing the front. The drawer box should not be able to roll past the panels when done correctly



Place four handle bolts (H) and push them through until they are flush with the drawer.



Attach the front drawer panel by placing it on the bolts. Then attach the handles (F) using the provided key. This will keep the front in place. Finally secure the front by inserting the long screws (I) into the six predrilled holes from the drawer box until the Drawer Front panel is flush with the drawer box.

Next, finish assembly by following the Deluxeseries assembly instructions provided.