

# LUONTO



## *Copenhagen Collection*

Two sofas in one package. The comfortable back cushions conveniently slide up to provide two settings: low support or high additional head support with deeper seating.



# LUONTO

www.luontofurniture.com



## CUSTOMIZING

1. Choose combination.
2. Choose upholstery: Available with hundreds of upholstery materials and colors.
3. Choose details: Sitting comfort, contrast stitching, functions and extras.
4. Choose legs: Tens of wooden or metal legs.

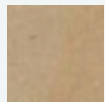
## FRAME CONSTRUCTION

Individually bench-made by Scandinavian craftsmen.

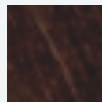
Seat Frame constructed of select SOLID SPRUCE with finger joints and no-zag springs (at least four per seat).

Back parts constructed with Mortise & Tenon design for extraordinary durability. Exterior sides and back fully padded.

## WOOD



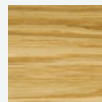
Natural



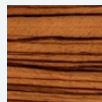
Walnut



Wenge



Oak



Zeprano

## COMFORT

Soft

## FUNCTIONS

Sleepers

## LEGS

Wood, Metal

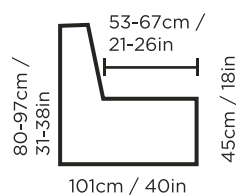
## UPHOLSTERY

Leather, Fabric,  
Comination

## EXTRA

Bold stitching, Bar, Audio

## MEASURES



## MODULES (ARMREST ON LEFT OR RIGHT)

Chair



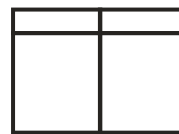
60cm / 24in

Jumbo Chair



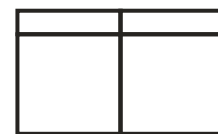
76cm / 30in

Loveseat



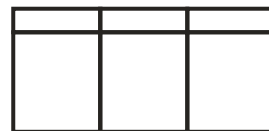
120cm / 47in

Jumbo Loveseat



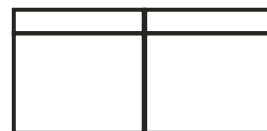
152cm / 60in

Sofa (3 seat)



180cm / 71in  
(Sleeper: 190cm / 75in)

Sofa (2 seat)



180cm / 71in  
(Sleeper: 190cm / 75in)

Corner



100cm / 39in

Corner table  
with bar



100cm / 39in  
(height: 58cm / 23in)

Curved Corner



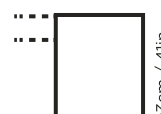
113cm / 44in

Chaise



76cm / 30in

Chaise end (fixed)



63cm / 25in

Ottoman



60cm / 24in

## SOFA SLEEPERS WITH EASY DELUXE MECHANISM (2 or 3 seat)



Bedsize:  
147x190cm /  
58x75in

## ARMRESTS



12cm / 5in



20cm / 8in



27cm / 11in  
(soft top)



28cm / 11in



28cm / 11in  
(Smart Audio)



33cm / 13in



37cm / 15in  
(with wooden  
self)



37cm / 15in  
(with storage)